

give...
for the
health of it

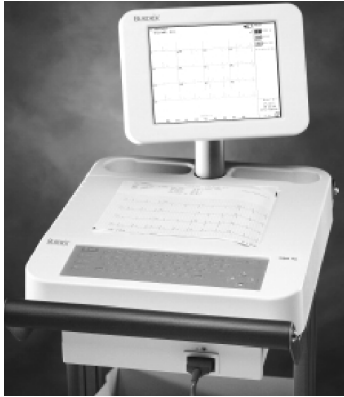


la santé...
en faire
son affaire



Timmins and District Hospital Foundation
Fondation de l'Hôpital de Timmins et du district

CARDIOPULMONARY



3 ECG Machines

\$49,100

The ECG Machine provides a non-invasive test that allows physicians to assess the electrical activity of a patient's heart. It is mainly used to detect or diagnose abnormal heart rhythms and recent or ongoing heart attacks. It can also be used to detect coronary artery blockage and areas of damaged heart muscle from a previous heart attack as well as acting as a screening tool prior to surgery. It is an important part of monitoring recovery from a heart attack, progression of heart disease, effectiveness of certain heart medications and pacemaker function.



BiPAP

\$20,000

BiPAP stands for Bi-level Positive Airway Pressure. It is machine that non-invasively (by mask) provides ventilation assistance to patient's who are having difficulty breathing on their own. The use of non-invasive ventilation is a recognized standard of care for certain clinical conditions and can result in a decreased length of stay for patients as well as provide more patient comfort than invasive ventilation.



Oximeter

\$10,000

A pulse oximeter is required to non-invasively measure the patients' oxygen saturation levels.



Recliner Chairs

\$10,000

This is a special chair made for heavier patients who need a range of seating from a tilt position to a stretcher position. It is for bariatric patients so it is durable yet comfortable for patients who are in need of proper seating.

CONTINUING CARE



Pulse Oximeters

\$1,000

A pulse oximeter is required to non-invasively measure the patients' oxygen saturation levels.



Dynamapp

\$4,000

The Dinamap is a portable monitor that non-invasively measures a patient's blood pressure, pulse rate, oxygen saturation levels and temperature. In addition it has an integrated printer that allows for convenient documentation of a patient's vital signs.



O2 Saturation Monitor

\$1,200

A pulse oximeter measures the amount of oxygen in the blood through digital technology. A small sensor is placed on a finger, so there is no discomfort to the patient. In addition to measuring the oxygen level, the pulse oximeter will count the patients palpable heart rate and alarms to detect changes or abnormalities. Pulse oximeters allow for the versatility of grab and go technology for easy access and portability to the patient bedside for rapid or elective treatment for our patients.



Palliative Care Mattress

\$15,000

Cushion of air that makes transferring you patients very easy. It is a mat that is placed under the patient. There is an air supply that inflates the mattress and escapes through small perforations. The combination of the patients body being suspended by air and the frictionless film of air leads to a smooth and comfortable transfer for the patients and staff. It is available for Bariatric patients that allows patient repositioning, boosting and transferring easily by staff. It requires 93% less force than a draw sheet.

CONTINUING CARE (cont'd)

Room Makeover

\$2,000

To provide a more cheery and home like atmosphere for families by redecorating a room with curtains, pictures , wallpaper boarder, a lamp and a lazy boy chair.

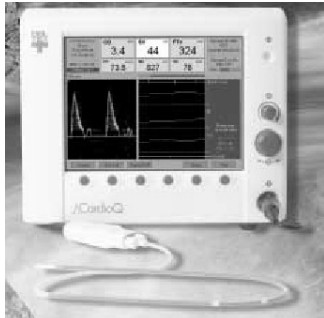
CRITICAL CARE



Central Monitor

\$300,000

The new central monitor is state of the art technology that provides us with the capability of monitoring the conditions of sixteen patients located in the Critical Care Unit and other patient located throughout the hospital by radio telemetry. The monitor alarms to alert of any life threatening condition allowing the physicians and nurses to respond immediately. It also provide a history of cardiac events for the prior 48 hours.



Cardio Q Oesophageal Doppler Ultrasound System (Arterial Vascular)

\$25,000

Cardio Q Oesophageal Doppler is a monitor that continuously monitors the Cardiac Output and Fluid Status of the heart.

DAY SURGERY



Gastroscope

\$32,000

A gastroscope is used to view the stomach in order to make a diagnosis. Biopsies can also be taken, polyps removed and diagnosis made.

DAY SURGERY (cont'd)



Stretchers x 2

\$18,000

The new stretcher will provide more comfort to the patient because they can be adjusted to a variety of positions and heights which also makes it easier to get on and off of them. They are also much easier for the Health Care Team members to handle due to an improved steering mechanism.

DIAGNOSTIC IMAGING



Ultrasound System

\$320,000

The new ultrasound machine will be used for performing sonography of the heart (a.k.a. echocardiography). With this machine we will be able to watch the motion of the heart, look at the valves, evaluate the blood flow through the heart, and take various measurements of all of its chambers. The machine will provide better images for the Radiologists and is more ergonomically efficient thus helping to prevent repetitive strain injuries to the sonographer. It is also lighter and more portable - allowing us to take the machine to the bedsides of patients too ill to be moved.



Nuclear Medicine Camera

\$1,100,000

The Nuclear Medicine Camera combined with other modern modalities, already available at T&DH, will offer a more powerful diagnostic tool for heart and cancer diseases. This tool will allow physicians to see the workings of the body as well as detect, characterize and quantify disease to an unprecedented extent. This is especially true for coronary artery disease.

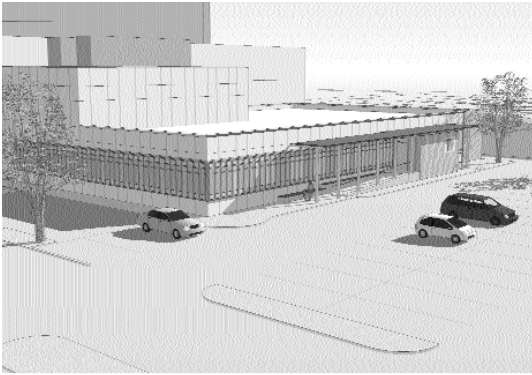


Pediatric Sedation in MRI

\$139,500

In order to achieve the highest quality MRI images, it is extremely important for our patients to remain perfectly still during the procedure. This can be extremely challenging when our patients are children. The provision of sedation for our younger pediatric patients will allow us to scan them effectively and achieve the best possible images to assist in providing a diagnosis. The specialized monitoring equipment will be used by the anaesthetist and the nurse when sedation is required. We look forward to enhancing the exceptional and safe care we provide for the children in our region.

DIALYSIS



Expansion Project

\$800,000

The Hemodialysis Unit is located adjacent to the Obstetrics Department and is presently in a landlocked position and therefore has no room for expansion. The Unit was designed for six stations and we are presently operating nine stations. By 2010, 14 haemodialysis will be needed to meet the growing demand and this will increase to 18 by 2015. The cost for the project, which represents an addition to the Hospital, of \$9.9 million dollars. The Government will provide \$9.1M of the total cost and the Foundation will be called upon to assist in raising the remaining \$800,000 for this project.

EMERGENCY



Stretcher

\$5,000

The new stretcher will provide more comfort to the patient because they can be adjusted to a variety of positions and heights which also makes it easier to get on and off of them. They are also much easier for the Health Care Team members to handle due to an improved steering mechanism.

LABORATORY



Cell Washer

\$10,000

A Cell Washer is an instrument used in Transfusion Medicine, to add consistency in the preparation of samples used to perform Blood Groups and Cross Matches.



Tissue processor

\$70,000

Tissue Processor - Histology - used to fix tissue prior to embedding in wax block.

MEDICAL



6 - Palliative Care Mattress \$85,000

Cushion of air that makes transferring you patients very easy. It is a mat that is placed under the patient. There is an air supply that inflates the mattress and escapes through small perforations. The combination of the patients body being suspended by air and the frictionless film of air leads to a smooth and comfortable transfer for the patients and staff. It is available for Beriatric patients that allows patient repositioning, boosting and transferring easily by staff. It requires 93% less force than a draw sheet.



Stretcher \$5,000

The new stretcher will provide more comfort to the patient because they can be adjusted to a variety of positions and heights which also makes it easier to get on and off of them. They are also much easier for the Health Care Team members to handle due to an improved steering mechanism.



Cadd Pump \$5,672

The CADD pump is a safe and effective device designed to provide pain management therapies specifically for the patients requiring chronic or palliative pain control on a continuous infusion. CADD is a hand held device that the patient can move about freely with. It allows the patient the freedom of delivering an additional dose of medication for pain within very safe parameters as required and monitors the frequency of these requests, so that changes can be made to the continuous infusion by the Physician.



2 Leather Lazy-Boy Chairs \$4,136

These leather covered chairs are multipurpose. They can be used as treatment chairs for patient seating and rest recliner chairs for family members wishing to stay with their loved ones in the hospital. Their smooth leather covering allows for proper cleaning between uses.

MEDICAL (cont'd)



Blanket Warmer

\$7,965

This is a cupboard that allows for the heating and storage of warm blankets. The units are available in a variety of sizes. Staff keep the warmer stocked with blankets and can easily access one within the unit when needed. A warm blanket for an ill patient or tired family member is extremely comforting.



2 - Scales

\$3,600

There are two different types of scales required. The first scale is used for monitoring the weights of patients who are visiting their oncologist for followup post-treatment at our cancer clinic. The second scale is a larger assistive scale for those patients who require the support of handles. Monitoring a patient's weight is important for the purpose of assessing nutritional and fluid status, and to be able to order medication appropriate to the size of the patient.



4 - Sofflex Mattresses

\$2,880

This mattress system offers a great deal of pressure relief, and is great in relieving pressure to those areas that may, over time, develop into major pressure sores.

MEDICAL (cont'd)



Pediatric Entertainment \$1,000

To provide some entertainment for pediatric patients.

Room Makeover \$2,000

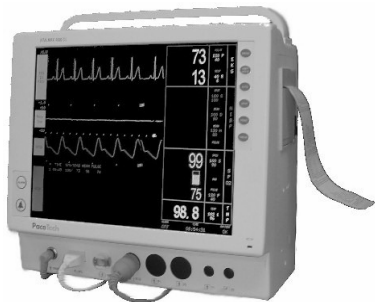
The room make over will provide a more attractive atmosphere for our patients in a beautiful and relaxing environment.

OBSTETRICS



4 - Light System in Labour Rooms \$20,000

These specialized lights are mounted to the ceiling in our labour rooms to illuminate specific areas. They are essential to the Obstetricians/Gynaecologists during deliveries.



Monitors for Labour Room \$20,000

This monitor is state of the art technology that provides us with the capability of monitoring the conditions of the mom and baby during delivery.

OBSTETRICS (cont'd)



Fetal Monitor

\$150,000

This technology monitors the mother and the baby's physical condition during labour and delivery.

ONCOLOGY



Bedside Table

\$133



Blanket Warmer

\$3,729

This is a cupboard that allows for the heating and storage of warm blankets. The units are available in a variety of sizes. Staff keep the warmer stocked with blankets and can easily access one within the unit when needed. A warm blanket for an ill patient or tired family member is extremely comforting.



Scale

\$1,000

The scale is used for monitoring the weights of patients who are visiting their oncologist for followup post-treatment at our cancer clinic.

ONCOLOGY (cont'd)



IV Pump

\$3,500

Intravenous pumps are used to accurately infuse a prescribed amount of intravenous fluid for patient's. The health care provider will set the pump according to the amount and type of fluid to be administered, and can be used for medication administration. This important piece of equipment allows for accuracy of dosing to the patient and efficiency and quality of work for the care provider.

Room Makeover

\$2,000

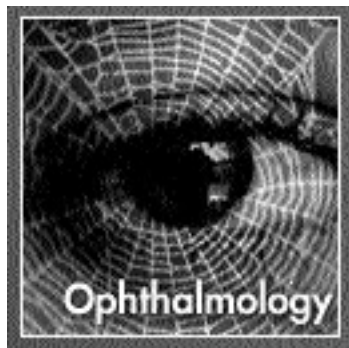
The room make over will provide a more attractive atmosphere for our patients in a beautiful and relaxing environment.

OPERATING ROOM



Modernization of 3 OR - \$1.230 million

The modernization of the OR is a necessity to meet the changes in technology which allows for more laparoscopic procedures and an ergonomic room is a requirement. These laparoscopic procedures provide for improving the quality of health care provided to your partners, your clients, your employees from the district and surrounding areas.



Ophthalmology Service \$350,000

In July 2009, our city will soon be home to this region's first full-time Ophthalmologist. As a result, the T&DH Foundation has embarked on an aggressive campaign to raise \$1 million over three years to purchase specialized medical equipment so that Dr. Alejandro Oliver can begin providing services to our patients. We anticipate that he will provide high quality general ophthalmology services and, if possible, a subspecialty in vitreo-retinal surgery.

PALLIATIVE CARE



Palliative Care Cart

\$2,500

This is a cart that stores equipment that can be used to convert a hospital room into a more calming environment for those patients in need. This is done with nicely coloured blankets, lamps for indirect lighting and soothing music that helps to create a more peaceful atmosphere for palliative patients and their family members.

PEDS/MED



Stretcher

\$5,000

The new stretcher will provide more comfort to the patient because they can be adjusted to a variety of positions and heights which also makes it easier to get on and off of them. They are also much easier for the Health Care Team members to handle due to an improved steering mechanism.

PHYSIOTHERAPY



Inter Ferrental Current

\$9,000

Interferential therapy has been used extensively for managing post surgical, post traumatic acute pain, edema and inflammation reduction. Studies have shown that patients using IFC after surgery develop fewer post-op complications. It aids circulation typically speeding a patient's recovery. The IFC modulates a hi-frequency carrier waveform, which penetrates the skin-concentrating deep within the tissue to promote healing.

PHYSIOTHERAPY (cont'd)



Treadmill

\$10,000

It is a computer program where we can customize exercise programs for clients. There are thousands of exercises divided into each joint, strengthening, stretching etc... The advantage is that we can assess clients, go to a computer and print an exercise program for that particular individual. This program could be accessed from any computer in the building and up to 3 or 4 users can be on at the same time

SLEEP LAB



Transcutaneous CO2 Monitor \$15,000

The Transcutaneous Monitor is ideal for the sleep lab, as it allows for accurate continuous measurement of carbon dioxide and oxygen through the skin.



End Tidal CO2

\$5,000

This piece of equipment measures the amount of carbon dioxide exhaled with each breath while a person is sleeping.

SURGICAL



Blanket Warmer

\$7,965

This is a cupboard that allows for the heating and storage of warm blankets. The units are available in a variety of sizes. Staff keep the warmer stocked with blankets and can easily access one within the unit when needed. A warm blanket for an ill patient or tired family member is extremely comforting.



Dynamapp

\$4,000

The Dinamap is a portable monitor that non-invasively measures a patient's blood pressure, pulse rate, oxygen saturation levels and temperature. In addition it has an integrated printer that allows for convenient documentation of a patient's vital signs.



Sofflex Mattress

\$720.00

This mattress system offers a great deal of pressure relief, and is great in relieving pressure to those areas that may, over time, develop into major pressure sores.

UROLOGY



Laser for lithotripsy

\$15,000

The Holmium laser is ideal for many endoscopic soft tissue applications in the urological tract, including: stricture relief, superficial tumors, bladder neck incision and holmium laser vaporization of the prostate and kidney stones.